

Marlborough

Victor Pasmore: Line & Space

April 12 – June 06, 2021

6 Albemarle Street, London

Gallery 1

Linear Composition, 1962–65

pencil and gravure on board

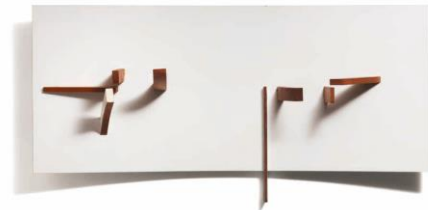
152.5 x 152.5 cm



Abstract in White, Black and Maroon, 1962

projective relief, paint on curved wood and plastic

61 x 121.9 x 21.5 cm



Points of Contact, Green Development, 1966

projective relief, oil on plastic and wood

123 x 123 x 27.5 cm



Green Development in Two Movements, 1989

oil and spray paint on board

183 x 122 cm



Marlborough

Square Image, 1971
projective relief, paint on board
80.5 x 80.5 cm



Voice of the Ocean, 1989
paint on panel
243.8 x 122 cm



Black Rhythm, 1976-77
projective relief, paint on wood
136.5 x 51 cm



Brown Symphony, 1979
oil on board
75.5 x 211 cm

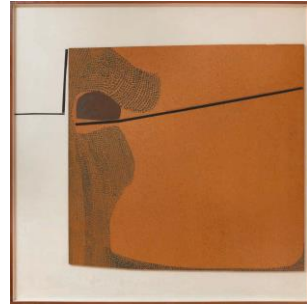


The Milky Way, 1987
paint on board
122 x 365.8 cm



Marlborough

Blue Development, 1965
oil on board
152.5 x 152.5 cm



Abstract in White, Black, Brown and Ochre, 1950
collage
40 x 38.4 cm

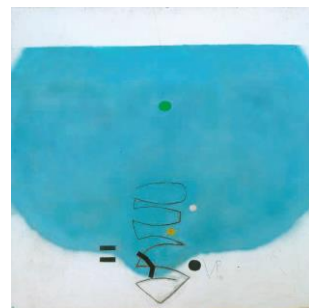


Gallery 2

Now That You Have Reached the Sky, 1993
oil and pencil on board
243.8 x 121.9 cm

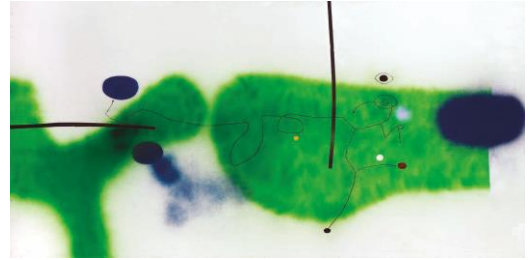


Untitled, 1996
oil, spray paint and pencil on board
121.9 x 121.9 cm

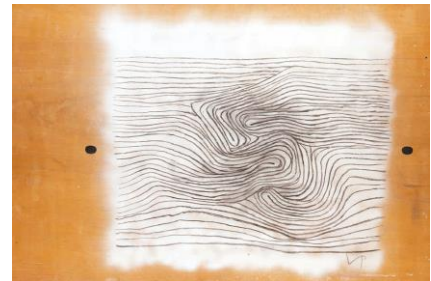


Marlborough

Untitled, 1993
oil, spray paint and pencil on board
121.9 x 243.8 cm



Untitled, c. 1996
oil spray paint and charcoal on board
121.9 x 213.3 cm



Gallery 3

Portrait Sketch: Florence Head, 1935
oil on canvas
45.7 x 35.5 cm



Miss Humphries, 1944
oil on canvas
50.8 x 40.7 cm



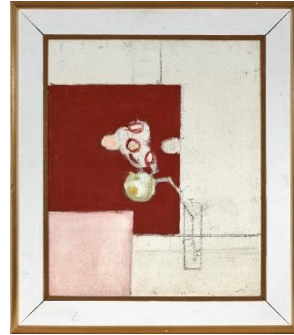
Girl with a Hand Mirror, 1938
oil on canvas
61 x 50.8 cm



Marlborough

*Everlasting Flowers: Indian Red, Pink and
Crimson, 1947*

oil on canvas
61 x 50.8 cm



Lily, 1941

oil on canvas
51 x 30.5 cm



Farleigh Church in Spring, 1926

oil on panel
31.1 x 43.9 cm



Basement Showroom

Abstract in White, Black and Mahogany,
1965-66

projective relief, paint on wood and
plastic

122 x 122 x 36 cm

